



iiyama values acting

responsibly towards the planet, our employees and customers while keeping sustainability and ethical practices at the core of our business.



#withiivama
MISSION AND VISION

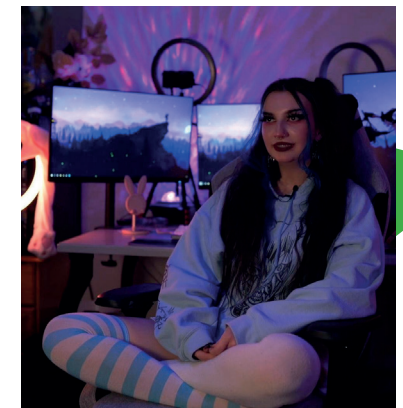
At iivama, we are committed to providing high-quality display solutions that are both efficient and reliable. Our mission is to empower individuals and organisations to interact with the world around them. While doing so, we strongly believe our responsibilities extend beyond the products and into the broader community. That's why we are committed to environmental protection, labour rights, and sustainability programs that align with the **United Nations' Sustainable Development Goals (SDGs)**. We strive to support our partners and initiatives working towards achieving these global goals laid down by the UN to end poverty, protect the planet and ensure that humanity enjoys peace and prosperity by 2030.



Our mission is to **empower individuals** and **organisations** to **interact** with the world around them.



We prioritise corporate governance, environmental protection, and social development as core values in our business operations. This includes but is not limited to programs on **environmental footprint, employee working conditions, and open and fair business**. Please read on for more information on our commitment to each of these values.



#withiiyama

ENVIRONMENTAL FOOTPRINT

iiyama understands the importance of conducting business with the environment in mind and we strive to make a positive impact on society by continuously improving our environmental practices and contributing to sustainable development. This commitment to sustainability is reflected in our recognition by **EcoVadis**, a leading assessment of sustainable business practices. In the last 3 years, we were awarded the **Bronze (2021)** and **Silver (2022)** medals and further strengthened our initiatives, leading to the achievement of the prestigious **Platinum Sustainability Rating by EcoVadis in 2023**, placing us in the top 1% of over 90,000 companies globally.



This award confirms iiyama's alignment with international sustainability standards and the integration of sustainability and CSR principles into our business and management system. In our efforts to reduce our environmental footprint and support sustainable development, we focus on implementing climate action initiatives. One such initiative in 2022 included the introduction of a new height-adjustable stand with ergonomic benefits for the end user, and a neat, more minimalistic design to minimize the carbon footprint. The stand already comes with the base of the stand attached to its neck with a fitted-in screw. This not only makes it extremely easy for the user to assemble the screen but reduces the number of separately packaged parts - reducing the number of plastic bags used for the packaging. The new slim design and reduced number of parts made it possible to fit the stand along with the screen into a smaller box. The smaller, new packaging of the product takes about 20-35% less space compared to the older box. This means more boxes can be fitted within one container reducing the CO2 footprint during logistics. iiyama strives to implement sustainability programs across our full supply chain and while it might be small, this is one of many steps we have planned to contribute towards a sustainable future.

Click here to know more about [iiyama Environmental and Sustainable Procurement Policy](#)



More ergonomic



Minimalistic design



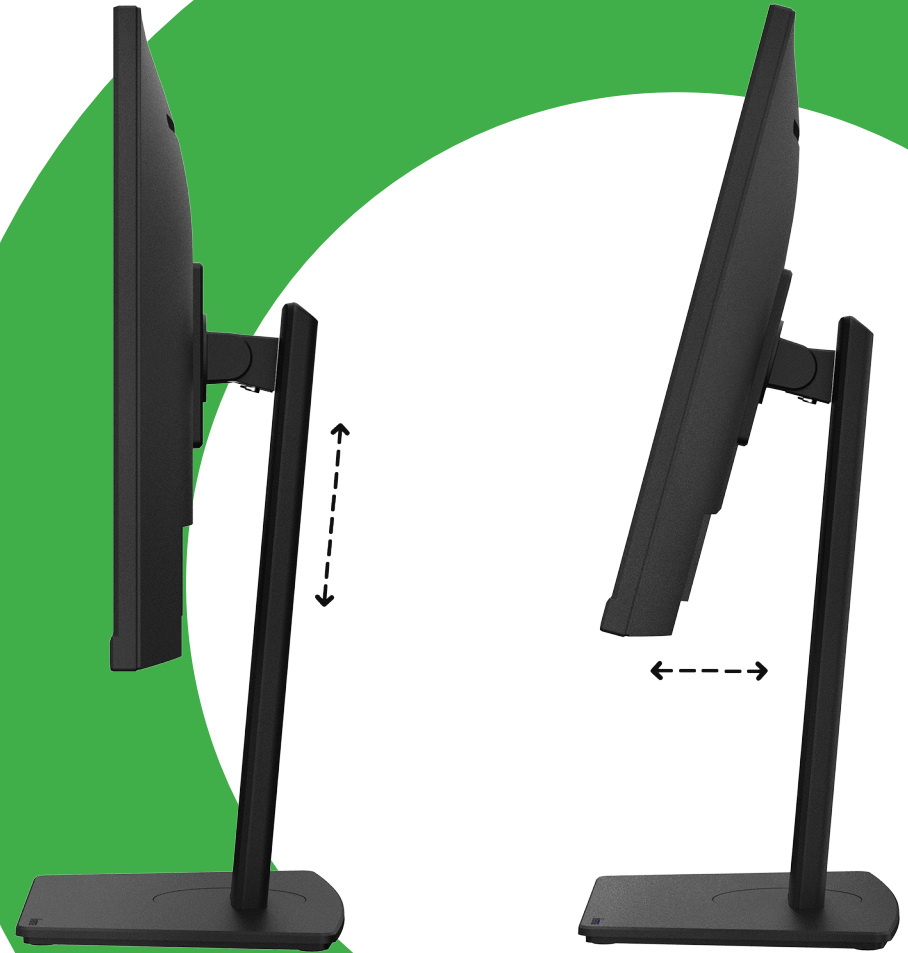
Easy assembly



Lesser plastic



Smaller boxes





10 REDUCED INEQUALITIES



#withiiyama

EMPLOYEE WORKING CONDITIONS

At iiyama, we understand that our employees are the driving force behind our success and a crucial aspect of sustainable development. As such, we prioritise creating a comfortable and healthy work environment for all our employees. To support this goal, we offer diverse and equal-opportunity employment and have implemented policies listed in our employee handbook to protect the rights of our workforce.

Additionally, we have built a diverse, tolerant workplace that is safe and healthy, where all employees have equal opportunities, are treated with respect, and are not overworked. In line with our commitment to ethical practices, iiyama prohibits child labour, hazardous working conditions, forced labour, and overtime. We also have strict policies in place to prevent sexual harassment and discrimination.

To know more about these policies, please refer to our [Equal Opportunity Employer Statement](#) and [Modern Slavery Statement](#).





#withiyama

OPEN AND FAIR BUSINESS

Finally, iiyama takes corporate governance seriously and is committed to conducting fair and open business practices. In line with this commitment, we have implemented responsible sourcing policies to ensure our products are not made with **Conflict Minerals**. iiyama has conducted a reasonable Country of Origin inquiry (RCOI) to determine if conflict minerals did originate in the Democratic Republic of Congo, or the covered Countries (CC). Our efforts include:

- Using the **Responsible Minerals Initiative (RMI) program** to identify the risk of Country of Origin by using the Conflict Minerals Reporting Template and Cobalt Reporting Template which are used by the industry.
- Conduct regular audits and assessments to ensure that our suppliers comply with these RMI policies.
- Have strict protocols in place to address any non-compliance.

8 DECENT WORK AND ECONOMIC GROWTH



To ensure open and fair business we have established internal whistle-blowing systems in all group companies worldwide. We also strive to ensure early detection and prevention of serious incidents, such as illegal activity or misconduct, that could damage our corporate values.

[iiyama Whistleblowing Policy](#)
[Anti-bribery Policy](#)

Through all these efforts, we aim to contribute to the sustainable development of our society and be responsible corporate citizens. More specific information about our CSR initiatives and supply chain performance can be found in the iiyama [annual CSR Report](#).

iiyama



iiyama International Corporate Headquarters

Wijkermeerstraat 8
2131 HA Hoofddorp, The Netherlands
phone: +31 204460404

www.iiyama.com