



# ScreenSharePro Manual (v0.1)

## 0. Before you start

Please check your TExx68MIS-B1AG display Version Info and verify that the date is 20-10-2017 or later. If your display shows an earlier date, please download and update your firmware.\*

To check for the right version info and date, tap 'Settings' from the home screen and go to 'System' and tap on 'About Device'.

Make sure that the OWM001 WiFi Module has been properly installed in the slot on the right side of the display next to the HDMI connectors and that the WiFi has been turned on.

To turn on the WiFi, tap 'Settings' from the home screen and go to 'Wireless & Networks' and tap 'Wi-Fi'. In the Wi-Fi menu, slide the Wi-Fi button (on the right of the screen) from right to left.

\* The firmware update contains the ScreenSharePro app and a quick installation guide. The zip file can be downloaded from the product page of your model at [iiyama.com](http://iiyama.com).



Image 1 - Installation of the OWM001

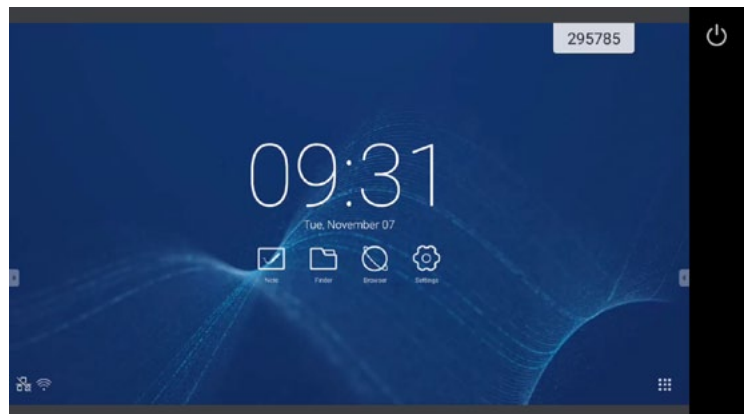


Image 1b - 68-series Home Screen

# 1 - ScreenSharePro Settings

Note: The ScreenSharePro app starts automatically at each system boot up. This is the default setting. When the 6-digit code is visible in the top right corner of the display, ScreenSharePro is active.

To access the ScreenSharePro home screen and access the settings and on screen user guide, tap the 9 dot icon in the lower right corner of your display's home screen (see image 1b)''

In the settings you can change how the ScreenSharePro app functions.

You can disable/enable the automatic start-up of the app. You can set the refresh time for the connection code and you can turn on/off the code that is shown in the top right corner of the display. (image 2)

1. Tap on the 'Menu' button in the left bottom corner of the ScreenSharePro Home screen. (image 2)
2. Tap on the option 'Settings'.
3. To turn on/off the automatic start-up of ScreenSharePro or to hide/show the connection code, simply swipe to turn these features off/on, (image 3)
4. To change the refresh time of the connection code, simply tap on the pull down field and select one of the other options (10 minutes, 20 minutes or 30 minutes)

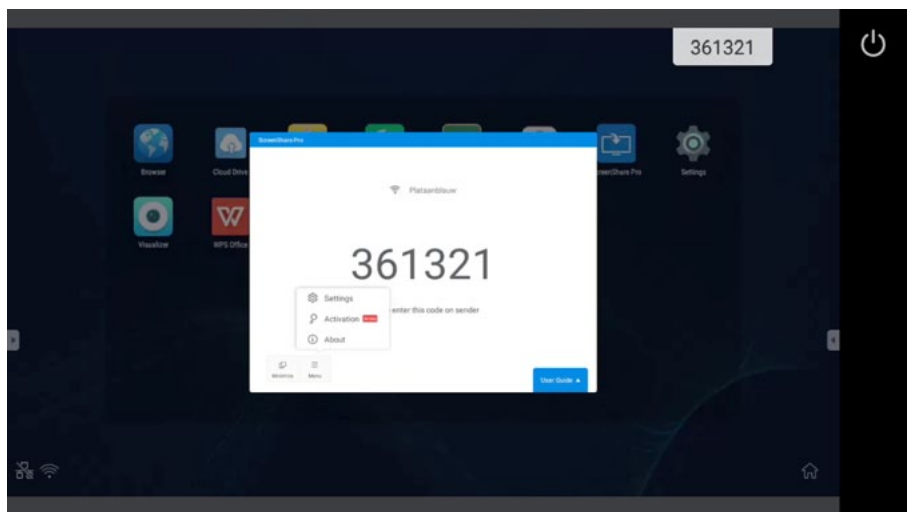


Image 2 - ScreenSharePro Home screen

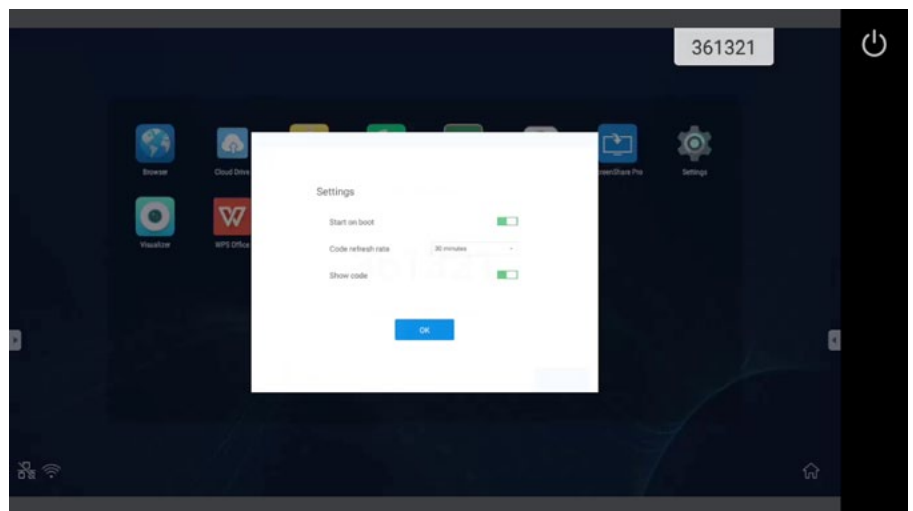


Image 3 - ScreenSharePro settings

## 2 - Downloading the ScreenSharePro app on your device

Go to <https://iiyama.com/connect> with your mobile device (Android, iOS, Windows and macOS supported) and the correct app will download automatically.

If the download does not start automatically, please click on the blue 'Download ScreenSharePro' button and select your operating system to download the app.

The iOS app is also available on the Apple App Store. Simply open your app store app and search for 'ScreenSharePro'.

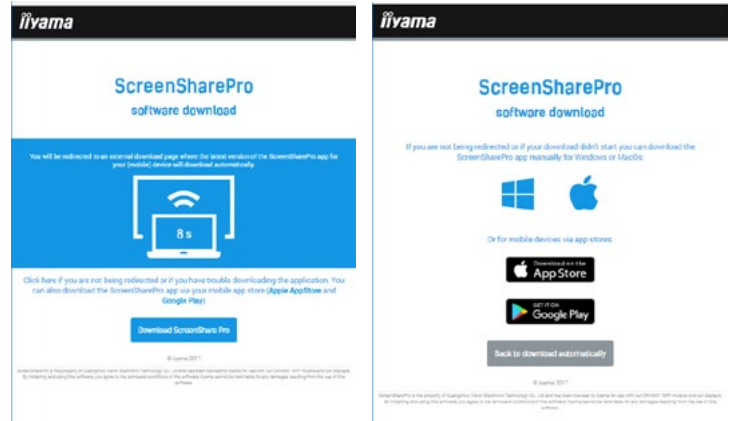


Image 5 /6 - Automatic download / Manual download screen

## 3 - Using the ScreenSharePro app

With the ScreenSharePro app, you can directly share your content from your mobile device on the display (up to 4 users can be connected at the same time). To use the app, all users must be connected to the same WIFI network as the display.

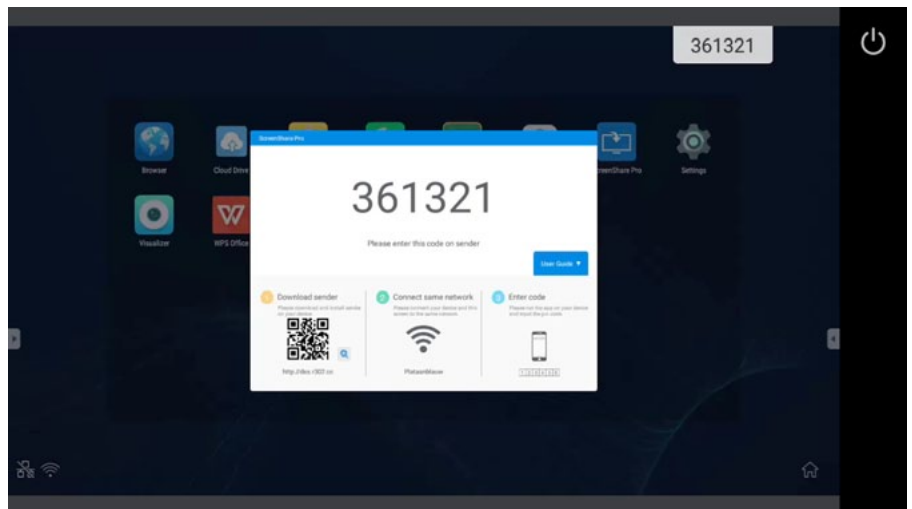


Image 6 - Connect codes on screen

From the ScreenSharePro app home screen (image 9) you can:

- Stream/mirror your device in real time on screen, showing everything that happens on your device.
- Access and share your media: photos, videos, and audio files directly on the screen.
- Make screenshots of the content on the display and save them on your device as a photo.
- Stream your device's camera (video recording only) on screen.

**0.** Open the app on your device and enter the 6-digit code that is shown on the display. (image 6) When successfully connected the app will show a connected screen (image 8) and switch to the app home screen (image 9) directly.

To start any of the ScreenSharePro features, click on the icon.

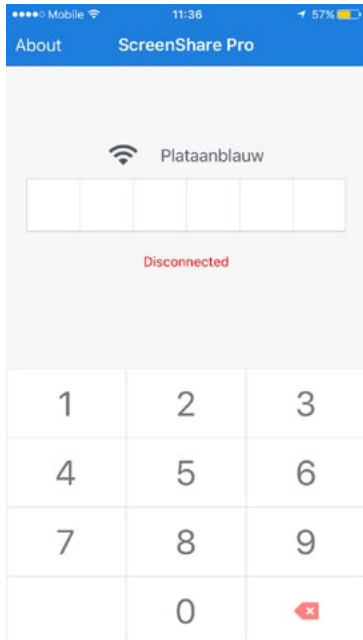


Image 7 - Enter Connect Code

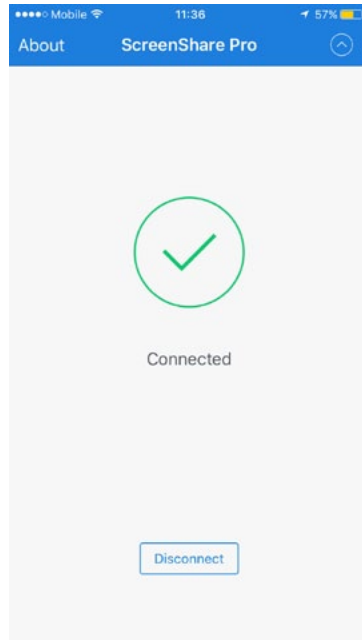


Image 8 - Connected successfully

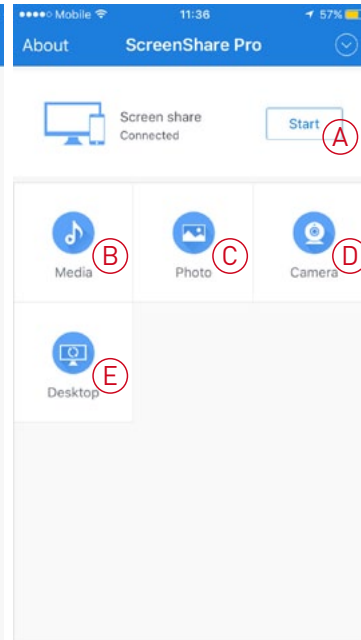


Image 9 - ScreenSharePro home screen

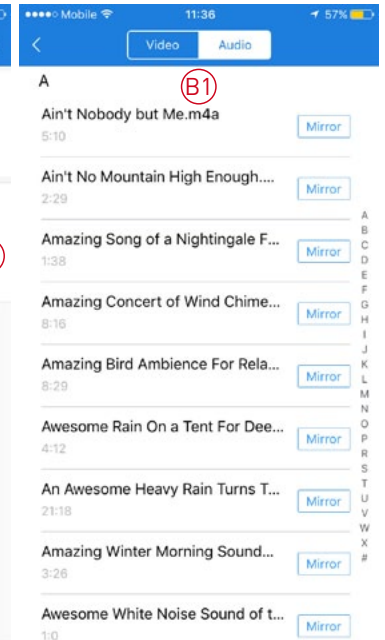


Image 10 - Selecting media type

1. To start/stop the mirroring of your device, click the Start/Stop button in the app (A).
2. To access and show any of the media on your device on screen tap the Media (B) or Photo button (C). The app opens the standard location for the media files on your device and when selecting a media file it displays it directly on screen.  
To switch from video to audio files, simply select video or audio from the top of the app (B1). To show/play another image or media file, go back and select another media file on your device.
3. To access the video camera, select the camera function of the app. To start the video feed, press the record button on your device and the recorded image is shown on screen. (D)
4. To take a screenshot from the display, please select the 'Desktop' icon in the app (E). Your device will show a screenshot from the main display on your device.  
To save the image to your device, take a screenshot from your device.  
To return to the main menu (image 9) select the power icon ( ) in the top right corner of the screenshot (see image 6).

